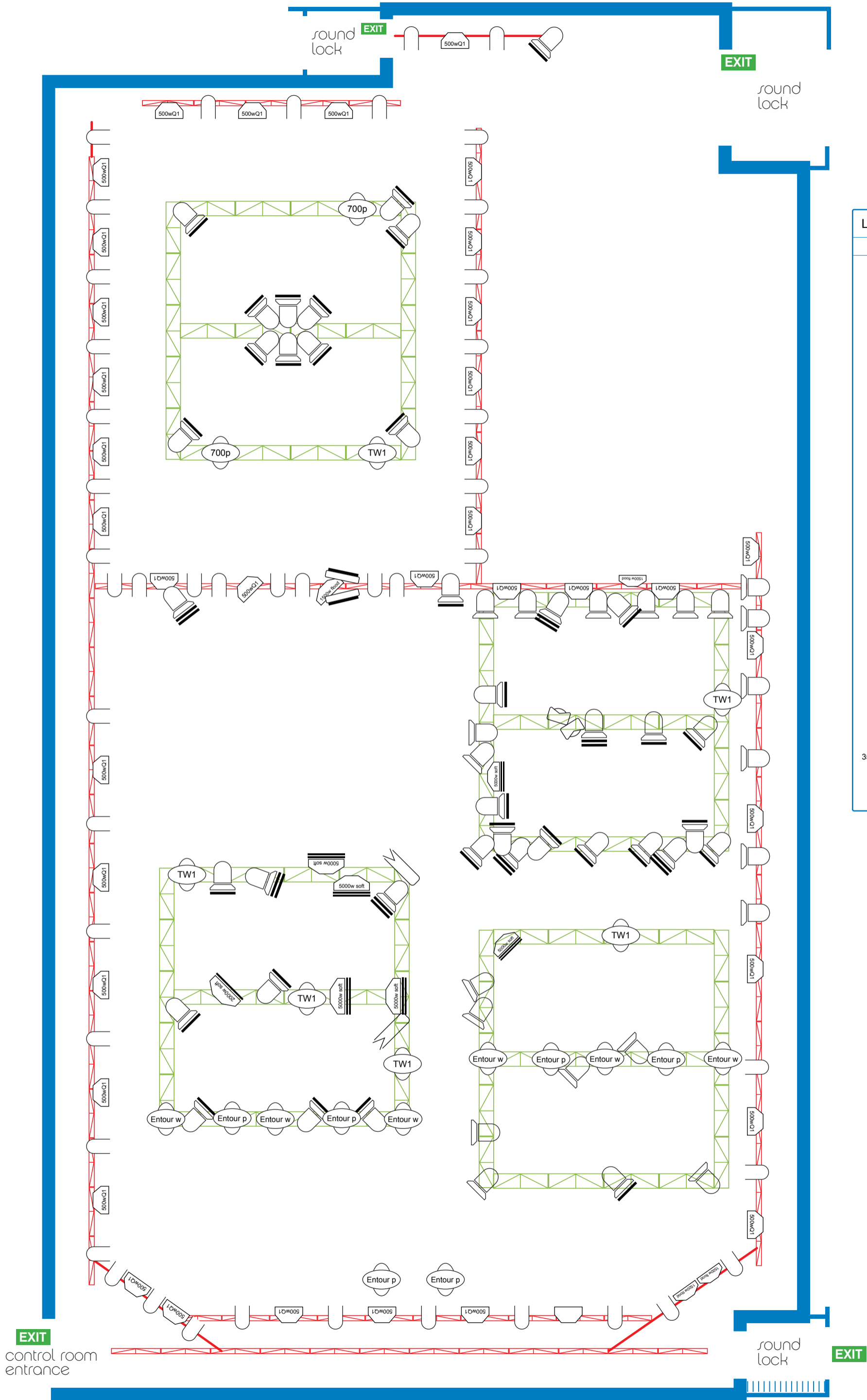


| Lighting Key | | |
|--------------------|------|-----|
| Name | Icon | Qty |
| par 64 | | 46 |
| RGB LED par | | 4 |
| mac Entour w | | 6 |
| mac Entour p | | 6 |
| mac TW1 | | 6 |
| mac 700p | | 2 |
| 500w Q1 flood | | 39 |
| 1500w flood | | 3 |
| 5000w soft | | 6 |
| 2000w soft | | 2 |
| 1000w frene11 | | 16 |
| 2000w frene11 | | 39 |
| 5000w frene11 | | 8 |
| 1200w zoomspot | | 2 |
| 350 Quest Speakers | | 2 |
| 42" Plasma | | 2 |



| Lighting Key | | |
|--------------------|------|-----|
| Name | Icon | Qty |
| par 64 | | 46 |
| RGB LED par | | 4 |
| mac Entour w | | 6 |
| mac Entour p | | 6 |
| mac TW1 | | 6 |
| mac 700p | | 2 |
| 500w Q1 flood | | 39 |
| 1500w flood | | 3 |
| 5000w soft | | 6 |
| 2000w soft | | 2 |
| 1000w frene11 | | 16 |
| 2000w frene11 | | 39 |
| 5000w frene11 | | 8 |
| 1200w zoomspot | | 2 |
| 350 Quest Speakers | | 2 |
| 42" Plasma | | 2 |